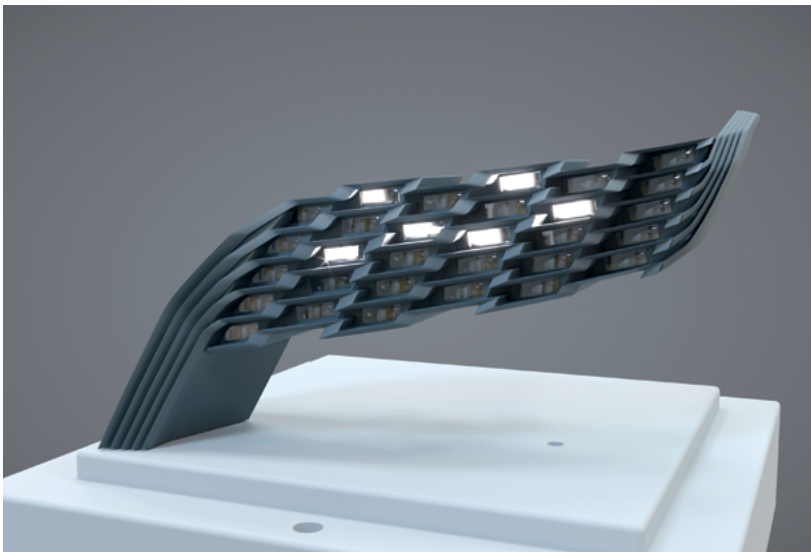




LUXEON Altilon Intense

High Luminance LEDs for miniaturized optics and superior styling, study demonstrating use of ultra-small optic modules to realize full set of AFS functions headlamps.



LUXEON Altilon Intense is a family of single- and multi-chip high luminance LEDs. It offers high luminance, superior contrast and small light emitting areas. Four products are available to allow design flexibility by a wide range in flux per package from 230-1020 hot lumens. The styling options enabled by Altilon Intense are demonstrated using a multitude of small lens projectors with 10 mm x 30 mm lenses generating city, country, bad-weather and motorway light pattern of an AFS system.

FEATURES AND BENEFITS

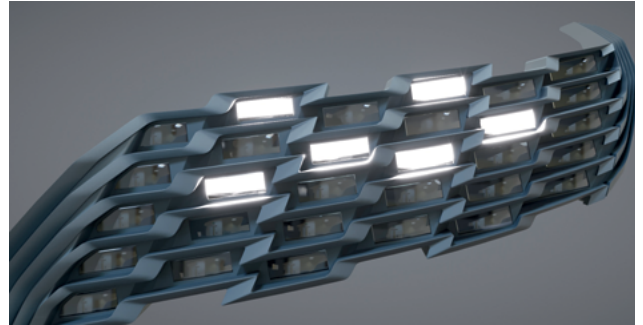
- Range of products with one to four chips providing 230 lm/chip hot
- High luminance and superior contrast
- Small light emitting area per chip to enable miniaturized optics
- Industry established package footprint for easy design in
- Improved mechanical tolerances

PRIMARY APPLICATIONS

- High beam, low beam with reflection and projection optics
- Adaptive Front-lighting Systems (AFS)
- Adaptive Driving Beam (ADB)
- Glare free high beam
- Matrix headlighting

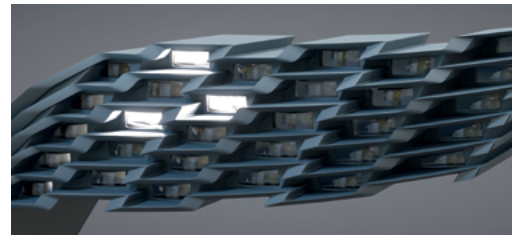
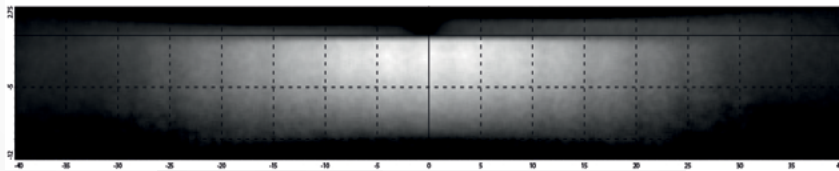
AFS realized with Altilon Intense behind 10mm x 30mm lenses

City, country, bad-weather and motorway light are realized by five cavities in total. Additional cavities are added for styling purposes. Each cavity holds a 10 mm x 30 mm PMMA lens. The Altilon Intense light is directed towards the lens by the use of silicone near die optics. This enables styling with superior efficiency of up to 55 %.



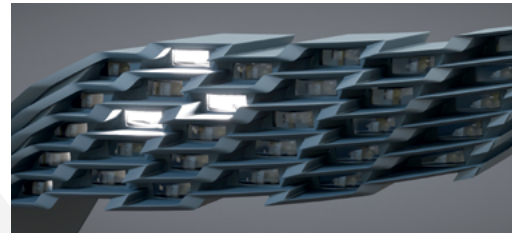
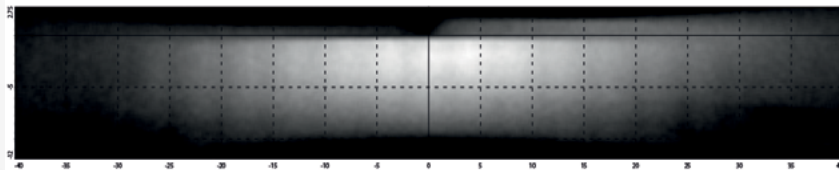
City Light:

3 cavities with 4 LEDs (2 x 1x3 @ 0.7 A, 1x1 @ 0.5 A, 1x2 @ 0.25 A)
1102 lm installed, 607 lm on road, 55 % efficiency*



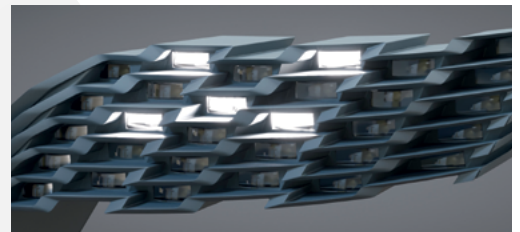
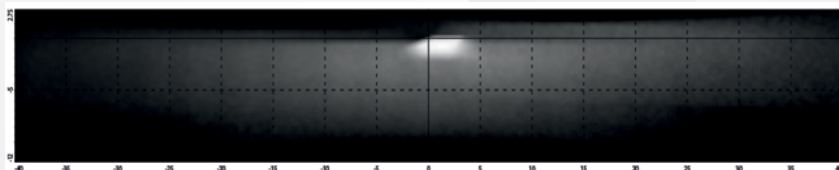
Country Light:

3 cavities, 4 LEDs (2 x 1x3@1 A, 1x1@0.5 A, 1x2@1 A)
802 lm installed, 943 lm on road, 53 % efficiency*



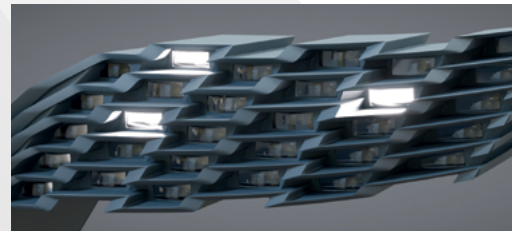
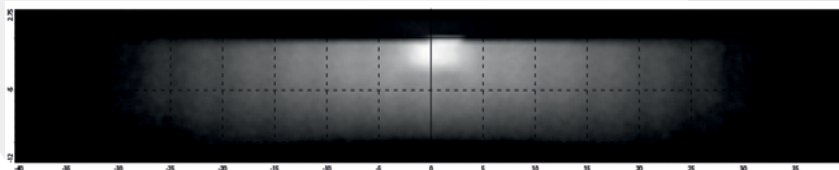
Bad-Weather Light:

5 cavities, 6 LEDs (2 x 1x3@0.5 A, 1x1@0.8 A, 1x2@1.25 A, 2 x 1x1@1 A)
1760 lm installed, 681 lm on road, 38 % efficiency*



Motorway Light:

3 cavities, 3 LEDs (2 x 1x3@0.7 A, 1x1@1 A)
1102 lm installed, 599 lm on road, 54 % efficiency*



*no cover glass considered

©2018 Lumileds Holding B.V. All rights reserved.
LUXEON is a registered trademark of the Lumileds Holding B.V.
in the United States and other countries.

www.lumileds.com

Neither Lumileds Holding B.V. nor its affiliates shall be liable for any kind of loss of data or any other damages, direct, indirect or consequential, resulting from the use of the provided information and data. Although Lumileds Holding B.V. and/or its affiliates have attempted to provide the most accurate information and data, the materials and services information and data are provided "as is," and neither Lumileds Holding B.V. nor its affiliates warrants or guarantees the contents and correctness of the provided information and data. Lumileds Holding B.V. and its affiliates reserve the right to make changes without notice. You as user agree to this disclaimer and user agreement with the download or use of the provided materials, information and data.