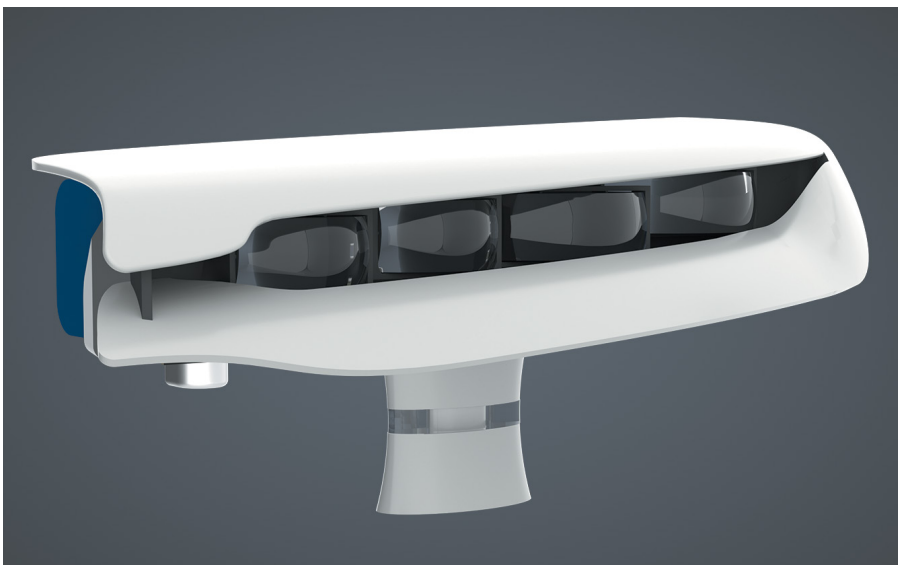


## LUXEON Altilon Intense Gen2

High Luminance for Miniaturized Optics and Distinctive Styling



LUXEON Altilon Intense Gen2 is a family of single- and multi-chip LEDs offering high luminance above 200 cd/mm<sup>2</sup> hot DC, superior contrast, and small light-emitting areas. Three flux configurations allow for extensive design flexibility. LUXEON Altilon Intense Gen2 creates distinct styling options by using compact and optically efficient modules in a slim headlamp design.

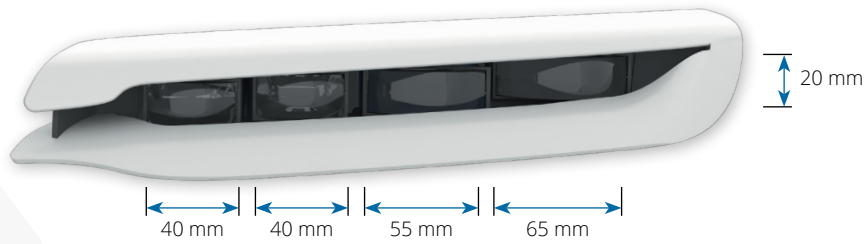
### FEATURES AND BENEFITS

- Full range of products with one to three chips providing a minimum flux of 350 lm/chip at 1.5 A and  $T_c = 85\text{ }^\circ\text{C}$
- High luminance (200 cd/mm<sup>2</sup> hot) and superior contrast
- Small light-emitting area of 0.5 mm<sup>2</sup> per chip with tight mechanical tolerances enabling miniaturized optics
- LUXEON Altilon family footprint for easy integration

### PRIMARY APPLICATIONS

- Low beam and high beam
- Adaptive front-lighting system (AFS)
- Adaptive driving beam (ADB)
- Glare-free high beam
- Matrix headlighting

# High-Performance Low Beam and Adaptive Driving Beam in a Slim Design with LUXEON Altilon Intense Gen2

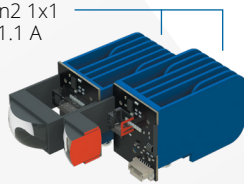


## Adaptive Driving Beam

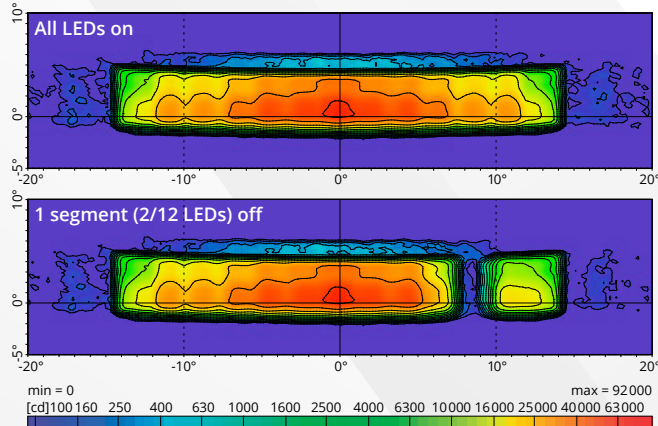
Two modules with TIR optics and projection lens

2 × 6 LUXEON Altilon Intense Gen2 1x1 (peak performance of 300 lm at 1.1 A and  $T_j = 85^\circ\text{C}$ )

20 mm lens height



## Optical performance



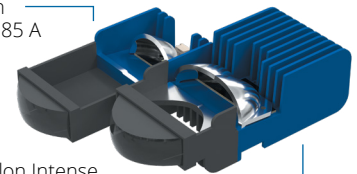
- Total installed flux: 2460 lm from 13 segments (dimming profile taken into account)
- Flux in beam\*: 1430 lm (all LEDs on)
- Width: +/-15° @ 250 cd
- $I_{\text{max}}^* = 71\,000\text{ cd}$
- Optical efficiency\*: 56%
- Pixel size of 3° (interlaced)

## Low Beam

Two modules with reflector-based projection optics using specular shutters

Spot module: 1 LUXEON Altilon Intense Gen2 1x2 (500 lm at 0.85 A and  $T_j = 85^\circ\text{C}$ )

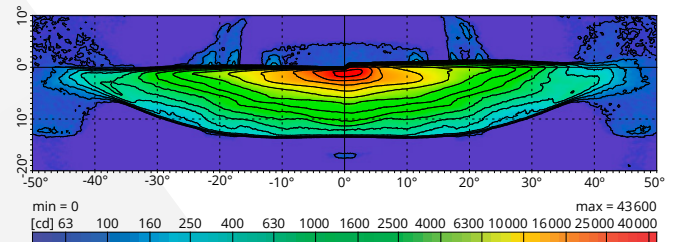
20 mm lens height



Spread module: 2 LUXEON Altilon Intense Gen2 1x3 (750 lm at 0.85 A and  $T_j = 85^\circ\text{C}$ )

AFS basic, motorway and city beams can be created by switching the light output of the individual modules.

## Optical performance



- Total installed flux: 2000 lm
- Flux in beam\*: 1050 lm
- Width: -42°/+43° @ 250 cd
- Optical efficiency\*: 53%

\* including losses at the cover glass

## Product Portfolio

LUXEON Altilon Intense Gen2	1x1	1x2	1x3
Light-emitting area (mm × mm)	0.68 × 0.88	0.68 × 1.70	0.68 × 2.72
Luminous flux at 1.5 A, $T_c = 85^\circ\text{C}$ (lm)**	375	750	1125
Luminance (cd/mm <sup>2</sup> )**	200	205	195
$T_{\text{c,max}}$ (°C) / $T_{\text{j,max}}$ (°C)	135 / 150	135 / 150	135 / 150
$R_{\text{thj-c,el}}$ (K/W)	7.0	3.8	2.4

\*\* flux and luminance values valid for H5 color bin, HC bin 3% lower

©2021 Lumileds Holding B.V. All rights reserved. LUXEON is a registered trademark of the Lumileds Holding B.V. in the United States and other countries.

[lumileds.com](http://lumileds.com)

Neither Lumileds Holding B.V. nor its affiliates shall be liable for any kind of loss of data or any other damages, direct, indirect or consequential, resulting from the use of the provided information and data. Although Lumileds Holding B.V. and/or its affiliates have attempted to provide the most accurate information and data, the materials and services information and data are provided "as is," and neither Lumileds Holding B.V. nor its affiliates warrants or guarantees the contents and correctness of the provided information and data. Lumileds Holding B.V. and its affiliates reserve the right to make changes without notice. You as user agree to this disclaimer and user agreement with the download or use of the provided materials, information and data. A listing of Lumileds product/patent coverage may be accessed at [lumileds.com/patents](http://lumileds.com/patents).