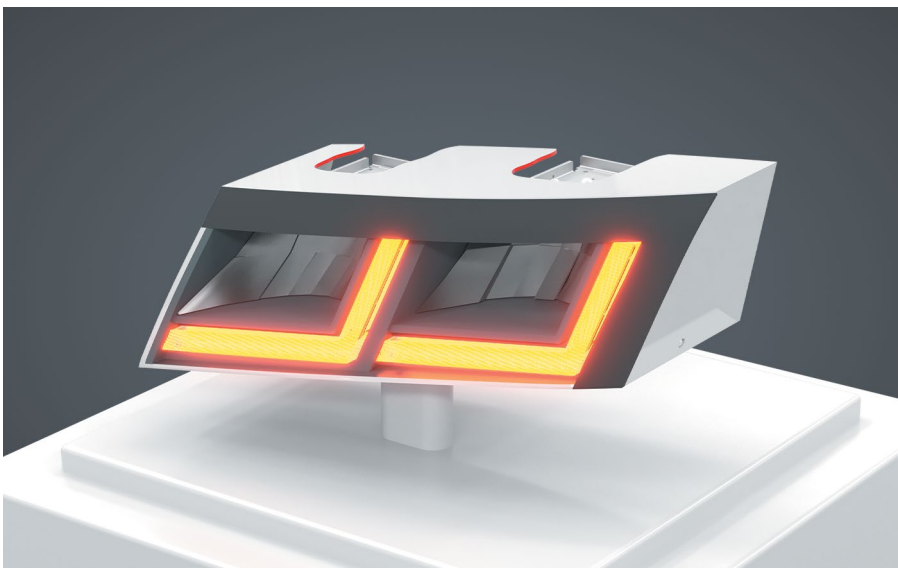




LUXEON Go portfolio extensions

Modular LED solutions for all front-lighting applications



The LUXEON Go family now brings its proven benefits to all front-lighting applications.

New portfolio extensions let you choose your preferred reference feature to accommodate your specific mechanical interface design.

New LED arrangements also allow you to harness LUXEON Go modules for DRL/TI applications.

FEATURES AND BENEFITS

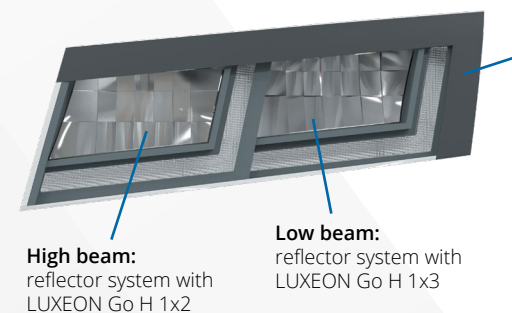
- Off-the-shelf solution with integrated heat management to shorten lead time to market and minimize development effort
- New, flat heat-sink designs allow a wide variety of design options
- Available in multiple configurations (1x2, 1x3, 1x4, and 1x5) to cover a wide range of desired flux performance levels
- Two types of mechanical reference features (pins or holes) available to match your preferred reflector-interface design
- Option for combined DRL/TI application with customized LED configuration

PRIMARY APPLICATIONS

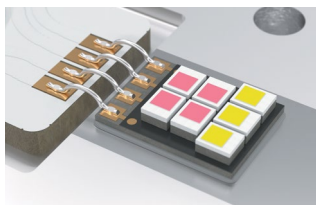
- Low beam and high beam
- Daytime running light (DRL)
- Front-turn indicator
- Cornering light
- Front fog

Build your full-function modular headlamp with LUXEON Go modules

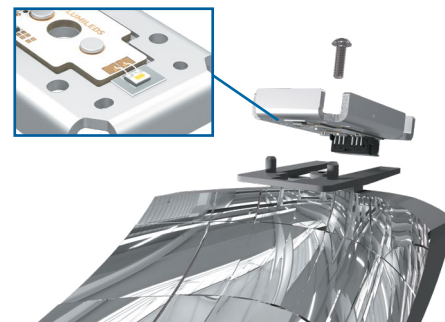
Reference design for LB/HB/DRL/TI



DRL/turn indicator: light-guide/-blade system with 2 x LUXEON Go DT (3 CW, 4 PCA each)

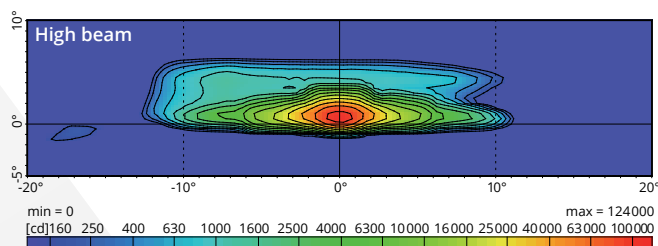
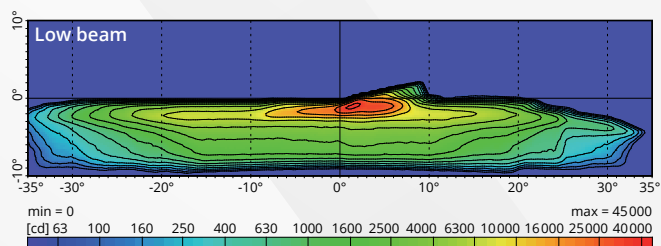


Mechanical interface to reflector



Optical performance

| | Low beam | High beam | DRL | Turn indicator |
|---|--------------|--------------|--------------|----------------|
| Flux from light source @ $T_a = 25\text{ }^\circ\text{C}$ | 1050 lm | 700 lm | 2 x 1000 lm | 2 x 1000 lm |
| Flux in beam (efficiency)* | 537 lm (51%) | 360 lm (52%) | 480 lm (24%) | 460 lm (23%) |
| Max. intensity value* | 43700 cd | 123000 cd | 1100 cd | 1100 cd |



* including 15% losses at the cover glass

Product portfolio

| | LUXEON Go | | | | LUXEON Go H & LUXEON Go DT | |
|---|--------------|--------------|-------------------|--------------|----------------------------|------------------------------------|
| | Heatsink 1x2 | Heatsink 1x3 | Heatsink 1x3 flat | Heatsink 1x4 | Heatsink A* | Heatsink B* |
| TopContact 1x1 | | | | | 500 lm | |
| TopContact 1x2 | | 700 lm | | | 700 lm | |
| TopContact 1x3 | | 1050 lm | 1050 lm | | 1000 lm | 1050 lm |
| TopContact 1x4 | | 1300 lm | 1300 lm | 1350 lm | | 1300 lm |
| TopContact 1x5 | | | | 1650 lm | | |
| 3 FX2-L CW + 4 FX2-L PCA on interposer* | | | | | | 1000 lm (white) 1000 lm (amber) |

* under development

©2019-2023 Lumileds Holding B.V. All rights reserved. LUXEON is a registered trademark of the Lumileds Holding B.V. in the United States and other countries.

lumileds.com



Neither Lumileds Holding B.V. nor its affiliates shall be liable for any kind of loss of data or any other damages, direct, indirect or consequential, resulting from the use of the provided information and data. Although Lumileds Holding B.V. and/or its affiliates have attempted to provide the most accurate information and data, the materials and services information and data are provided "as is", and neither Lumileds Holding B.V. nor its affiliates warrants or guarantees the contents and correctness of the provided information and data. Lumileds Holding B.V. and its affiliates reserve the right to make changes without notice. You as user agree to this disclaimer and user agreement with the download or use of the provided materials, information and data. A listing of Lumileds product/patent coverage may be accessed at lumileds.com/patents.