

Discover Lumileds' world-class automotive LED portfolio

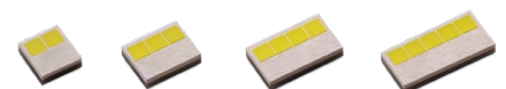
LUXEON Altilon SMD-A



Multi-die, surface-mount LED family based on 1 mm² emitters with single addressability available in multiple lumen packages. Compatible with AI-IMS substrates. Features sharp contrast and high luminance, making it suitable for all headlighting applications requiring high flux output per package.

PRODUCT	COLOR	TEST CURRENT (mA)	MAX DC CURRENT (mA)	TYPICAL FLUX @ 85 °C (lm)	PART NUMBER
LUXEON Altilon SMD-A 1x2	Cool white	1000	1500	782	A1SD-58502DHxxxx0
LUXEON Altilon SMD-A 1x3	Cool white	1000	1500	1173	A1SD-58503DHxxxx0
LUXEON Altilon SMD-A 1x4	Cool white	1000	1500	1564	A1SD-58504DHxxxx0
LUXEON Altilon SMD-A 1x5	Cool white	1000	1500	1955	A1SD-58505DHxxxx0

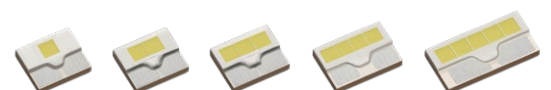
LUXEON Altilon SMD



Multi-die, surface-mount LED family based on 1 mm² emitters available in multiple lumen packages. Features sharp contrast and high luminance, making it suitable for all headlighting applications requiring high flux output per package.

PRODUCT	COLOR	TEST CURRENT (mA)	MAX DC CURRENT (mA)	TYPICAL FLUX @ 85 °C (lm)	PART NUMBER
LUXEON Altilon SMD 1x2	Cool white	1000	1500	782	A1SC-58502DH3xxxx0
LUXEON Altilon SMD 1x3	Cool white	1000	1500	1173	A1SC-58503DH3xxxx0
LUXEON Altilon SMD 1x4	Cool white	1000	1500	1564	A1SC-58504DH3xxxx0
LUXEON Altilon SMD 1x5	Cool white	1000	1500	1955	A1SC-58505DH3xxxx0

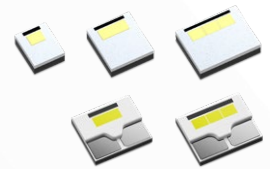
LUXEON Altilon TopContact



Multi-die, top-contact LED family based on 1 mm² emitters available in multiple lumen packages. Features sharp contrast and high luminance, making it suitable for all headlighting applications requiring high flux output per package.

PRODUCT	COLOR	TEST CURRENT (mA)	MAX DC CURRENT (mA)	TYPICAL FLUX @ 85 °C (lm)	PART NUMBER
LUXEON Altilon TopContact 1x1	Cool white	1000	1500	374	A1ST-58501DHxxxx0
LUXEON Altilon TopContact 1x2	Cool white	1000	1500	748	A1ST-58502DHxxxx0
LUXEON Altilon TopContact 1x3	Cool white	1000	1500	1122	A1ST-58503DHxxxx0
LUXEON Altilon TopContact 1x4	Cool white	1000	1500	1496	A1ST-58504DHxxxx0
LUXEON Altilon TopContact 1x5	Cool white	1000	1500	1870	A1ST-58505DHxxxx0
LUXEON Altilon TopContact 1x5L	Cool white	1000	1600	1985	A1SU-58505DHxxxx0

LUXEON Altilon Intense / LUXEON Altilon TopContact Intense



Surface-mount / top-contact LED family with small light-emitting area available in multiple lumen packages. Both LED families feature superior contrast and highest luminance, making them best suited for all headlighting applications aiming for miniaturized optics and superior beam performance.

PRODUCT	COLOR	TEST CURRENT (mA)	MAX DC CURRENT (mA)	TYPICAL FLUX @ 85 °C (lm)	PART NUMBER
LUXEON Altilon Intense 1x1	Cool white	1500	1600	399	A1SL-58501EHxxxx0
LUXEON Altilon Intense 1x2	Cool white	1500	1600	798	A1SL-58502EHxxxx0
LUXEON Altilon Intense 1x3	Cool white	1500	1600	1197	A1SL-58503EHxxxx0
LUXEON Altilon TopContact Intense 1x2	Cool white	1500	1600	798	A1TI-58502EHxxxx0
LUXEON Altilon TopContact Intense 1x3	Cool white	1500	1600	1197	A1TI-58503EHxxxx0

LUXEON FX2



Family of single-chip LEDs based on 1 mm² emitter available in 2-pad/3-pad package layouts in CW and PCA addressing all headlighting and front-signaling applications.

PRODUCT	COLOR	TEST CURRENT (mA)	MAX DC CURRENT (mA)	TYPICAL FLUX @ 85 °C (lm)	PART NUMBER
LUXEON FX2 CW	Cool white	1000	1500	391	A1F2-5850S2D0xxxx0
LUXEON FX2-L CW	Cool white	1000	1500	404	A1F2-5850F2D0xxxx0
LUXEON FX2 PLUS CW	Cool white	1000	1500	391	A1F2-5850S3D0xxxx0
LUXEON FX2-L PLUS CW	Cool white	1000	1500	404	A1F2-5850F3D0xxxx0
LUXEON FX2-L PCA	PC amber	1000	1000	305	A1F2-0591F2D0xxxx0
LUXEON FX2-L PLUS PCA	PC amber	1000	1000	305	A1F2-0591F3D0xxxx0

LUXEON Altilon SMD DT



Family of dual-color LEDs (CW/PCA) with high flux output enabling front turn and DRL out of the same optical cavities for maximized optical efficiency.

PRODUCT	COLOR	TEST CURRENT (mA)	MAX DC CURRENT (mA)	TYPICAL FLUX @ 85 °C (lm)	PART NUMBER
LUXEON Altilon SMD DT 3W	Cool white	1000	1500	335	A1SC-DT012DHxxxxxx
	PC amber	1000	1000	265	
LUXEON Altilon SMD DT 1W	Cool white	500	750	150	A1SC-DT112BHxxxxxx
	PC amber	500	500	125	

LUXEON Versat Dual Color



Dual-color LED (CW/PCA) enabling front turn and DRL out of the same optical cavities for maximized optical efficiency.

PRODUCT	COLOR	TEST CURRENT (mA)	MAX DC CURRENT (mA)	MINIMUM FLUX @ 25 °C (lm)	PART NUMBER
LUXEON Versat Dual Color	Cool white	150	250	53	A1VC-DT00A01xxxxxx
	PC amber	150	250	33	

Additional color combinations possible upon request.

LUXEON Versat 2016, 2020, and 3030

PRODUCT	COLOR [DOMINANT WAVELENGTH]	TEST CURRENT (mA)	MAX DC CURRENT (mA)	MINIMUM FLUX @ 25 °C (lm)	PART NUMBER
---------	-----------------------------	-------------------	---------------------	---------------------------	-------------

2016

New, smallest emitter in CW, PCA, direct reds as well as other CCT/CRI – addressing emerging automotive exterior applications.



LUXEON Versat 2016 30 CW	Cool white	30	90	6.0	A1VS-5850A
LUXEON Versat 2016 60 CW	Cool white	60	200	21	A1VS-5850B
LUXEON Versat 2016 60 PCA	PC amber	60	200	12	A1VS-P591B
LUXEON Versat 2016 60 3570	Warm white	60	200	18	A1VS-3570B
LUXEON Versat 2016 60 3090	Warm white	60	200	15	A1VS-3090B
LUXEON Versat 2016 60 2790	Warm white	60	200	15	A1VS-2790B
LUXEON Versat 2016 50 LR	Long red [630 nm]	50	90	5.1	A1VS-S627B
LUXEON Versat 2016 50 SR	Super red [635 nm]	50	90	5.1	A1VS-S632B

2020

Small emitter available in CW, PCA, and PC cyan as well as direct amber, cyan, and reds – addressing all exterior signaling applications.



LUXEON Versat 2020 CW 150	Cool white	150	250	53	A1VB-5850Ax
LUXEON Versat 2020 PC Cyan	PC cyan	150	250	36	A1VB-P499A0
LUXEON Versat 2020 PCA 150	PC amber	150	250	33	A1VB-P591Ax
LUXEON Versat 2020 Direct Cyan	Cyan [492 nm]	200	250	33	A1VB-C492B0
LUXEON Versat 2020 Direct Cyan	Cyan [497 nm]	200	250	33	A1VB-C497B0
LUXEON Versat 2020 50 AM	Amber [586 nm]	50	70	6.1	A1VB-A584Bx
LUXEON Versat 2020 50 AM	Amber [590 nm]	50	70	7.3	A1VB-A588Bx
LUXEON Versat 2020 140 AM	Amber [586 nm]	140	200	15	A1VB-A584Cx
LUXEON Versat 2020 140 AM	Amber [590 nm]	140	200	18	A1VB-A588Cx
LUXEON Versat 2020 20	Red-orange [615 nm]	20	50	3.0	A1VB-O612Ax
LUXEON Versat 2020 20	Red [623 nm]	20	50	2.1	A1VB-R620Ax
LUXEON Versat 2020 20	Long red [630 nm]	20	50	1.8	A1VB-S627Ax
LUXEON Versat 2020 20	Super red [635 nm]	20	50	1.3	A1VB-S632Ax
LUXEON Versat 2020 50	Red-orange [615 nm]	50	90	7.3	A1VB-O612Bx
LUXEON Versat 2020 50	Red [623 nm]	50	90	6.1	A1VB-R620Bx
LUXEON Versat 2020 50	Long red [630 nm]	50	90	5.1	A1VB-S627Bx
LUXEON Versat 2020 50	Super red [635 nm]	50	90	4.3	A1VB-S632Bx
LUXEON Versat 2020 140	Red-orange [615 nm]	140	200	21	A1VB-O612Cx
LUXEON Versat 2020 140	Red [623 nm]	140	200	21	A1VB-R620Cx
LUXEON Versat 2020 140	Long red [630 nm]	140	200	15	A1VB-S627Cx
LUXEON Versat 2020 140	Super red [635 nm]	140	200	12.5	A1VB-S632Cx

3030

Industry-standard emitter available in CW, PCA, PC green, PC red and direct reds.



LUXEON Versat 3030 ST 150 CW	Cool white	150	250	53	A1VC-5850Ax
LUXEON Versat 3030 ST 350 CW	Cool white	350	500	119	A1VC-5850Cx
LUXEON Versat 3030 ST 150 PCA	PC amber	150	250	30	A1VC-P591Ax
LUXEON Versat 3030 ST 350 PCA	PC amber	350	500	70	A1VC-P591Cx
LUXEON Versat 3030 ST 350 PCG	PC green	350	500	126	A1VC-G507Cx
LUXEON Versat 3030 ST 350 PCR	PC red	350	500	40	A1VC-P620Cx
LUXEON Versat 3030 ST 200	Red-orange [615 nm]	200	300	30	A1VC-O612Ax
LUXEON Versat 3030 ST 200	Red [623 nm]	200	300	25	A1VC-R620Ax
LUXEON Versat 3030 ST 200	Long red [630 nm]	200	300	21	A1VC-S627Ax
LUXEON Versat 3030 ST 200	Super red [635 nm]	200	300	15	A1VC-S632Ax
LUXEON Versat 3030 ST 350	Red-orange [615 nm]	350	500	60	A1VC-O612Dx
LUXEON Versat 3030 ST 350	Red [623 nm]	350	500	50	A1VC-R620Dx
LUXEON Versat 3030 ST 350	Long red [630 nm]	350	500	30	A1VC-S627Dx
LUXEON Versat 3030 ST 350	Super red [635 nm]	350	500	20	A1VC-S632Dx

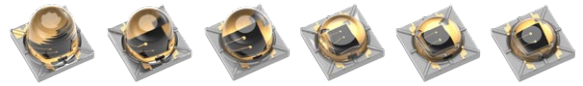
SignalSure



Mid- to low-power LED in an industry-standard footprint for rear-signaling applications.

PRODUCT	COLOR [DOMINANT WAVELENGTH]	TEST CURRENT (mA)	MAX DC CURRENT (mA)	MINIMUM FLUX @ 25 °C (lm)	PART NUMBER
SignalSure 30	Red-orange [615 nm]	30	60	5.1	A1DT-O621L
SignalSure 30	Red [623 nm]	30	60	4.3	A1DT-R620L
SignalSure 30	Long red [630 nm]	30	60	3.0	A1DT-S627L
SignalSure 30	Super red [635 nm]	30	60	2.3	A1DT-S632L
SignalSure 75	Amber [586 nm]	75	90	10.4	A1DP-A584L
SignalSure 75	Amber [590 nm]	75	90	13.5	A1DP-A588L
SignalSure 75	Red-orange [615 nm]	75	90	12.5	A1DP-O612L
SignalSure 75	Red [623 nm]	75	90	10.4	A1DP-R620L
SignalSure 75	Long led [630 nm]	75	90	8.0	A1DP-S627L
SignalSure 75	Super red [635 nm]	75	90	5.6	A1DP-A632L
SignalSure 250	Red-orange [615 nm]	250	300	47.0	A1DL-O612L
SignalSure 250	Red [623 nm]	250	300	36.0	A1DL-R620L
SignalSure 250	Long red [630 nm]	250	300	27.0	A1DL-S627L
SignalSure 250	Super red [635 nm]	250	300	19.5	A1DL-S632L

LUXEON IR Domed for Automotive



Automotive-qualified, high-power infrared emitters enabling different beam patterns.

PRODUCT	PEAK WAVELENGTH (nm)	TYPICAL FWHM BEAM ANGLE (°)	TYPICAL RADIOMETRIC POWER (mW)	TYPICAL RADIANT INTENSITY (mW/sr)	TYPICAL SPECTRUM FWHM (nm)	PART NUMBER
LUXEON IR Domed	927	136	1400	255	29	L110-A930135020000
LUXEON IR Domed	927	146	1400	310	29	L110-A930145020000
LUXEON IR Domed	927	139	1400	340	29	L110-A930150020000
LUXEON IR Domed	945	45	1375	1265	36	L110-A940050020000
LUXEON IR Domed	945	61	1375	1130	36	L110-A940060020000
LUXEON IR Domed	945	90	1375	740	36	L110-A940090020000
LUXEON IR Domed	945	136	1375	250	36	L110-A940135020000
LUXEON IR Domed	945	146	1375	305	36	L110-A940145020000
LUXEON IR Domed	945	139	1375	330	36	L110-A940150020000

©2022-2024 Lumileds Holding B.V. All rights reserved. LUXEON is a registered trademark of the Lumileds Holding B.V. in the United States and other countries.

lumileds.com



Neither Lumileds Holding B.V. nor its affiliates shall be liable for any kind of loss of data or any other damages, direct, indirect or consequential, resulting from the use of the provided information and data. Although Lumileds Holding B.V. and/or its affiliates have attempted to provide the most accurate information and data, the materials and services information and data are provided "as is", and neither Lumileds Holding B.V. nor its affiliates warrants or guarantees the contents and correctness of the provided information and data. Lumileds Holding B.V. and its affiliates reserve the right to make changes without notice. You as user agree to this disclaimer and user agreement with the download or use of the provided materials, information and data. A listing of Lumileds product/patent coverage may be accessed at lumileds.com/patents.