



LUXEON CX Plus CoB – High Density (Below BBL)

Higher lumen density with industry standard footprint



LUXEON CX Plus CoB – High Density (Below BBL) creates remarkable and impressive white color at 95CRI, 2- and 3-step MacAdam ellipse Below Black Body Line. Using the same mechanical dimensions as LUXEON CX Plus CoB – High Density, Light Emitting Surfaces of 4.5mm, 6mm, and 9mm, and an industry standard footprint of 13.35mm x 13.35mm, LUXEON CX Plus CoB – High Density (Below BBL) benefits from an existing ecosystem allowing immediate and effortless upgrades to a premium luminaire design.

FEATURES AND BENEFITS

Industry's smallest Light Emitting Surfaces (LES) for highest lumen densities at CRI 95

An immediate, effortless upgrade to existing designs using legacy CoBs with a square footprint

2- and 3-step MacAdam ellipse ensuring color consistency from luminaire to luminaire

PRIMARY APPLICATIONS

Spotlights

Track Lights

Downlights

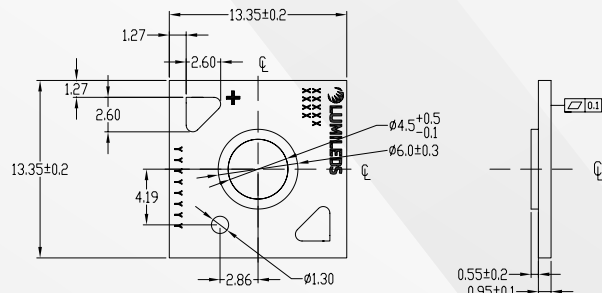
LUXEON CX Plus CoB – High Density (Below BBL) product performance at specified test current, $T_j=85^{\circ}\text{C}$.

PRODUCT	NOMINAL CCT	MINIMUM CRI ^[1, 2, 3]	LUMINOUS FLUX ^[1] (lm)		TYPICAL LUMINOUS EFFICACY (lm/W)	TEST CURRENT (mA)	LES ^[5] (mm)	ENERGY EFFICIENCY CLASS ^[7]	PART NUMBER ^[6]
			MINIMUM	TYPICAL ^[4]					
LUXEON CX Plus CoB – HD S02H4	2700K	95	508	552	89	175	4.5	G	L2C4-2795xS02F04B0
	3000K	95	540	587	94	175	4.5	F	L2C4-3095xS02F04B0
	3500K	95	558	606	98	175	4.5	F	L2C4-3595xS02F04B0
	4000K	95	578	628	101	175	4.5	F	L2C4-4095xS02F04B0
LUXEON CX Plus CoB – HD S02H6L	2700K	95	532	578	93	175	6.0	F	L2C4-2795xS02FH6B0
	3000K	95	564	613	99	175	6.0	F	L2C4-3095xS02FH6B0
	3500K	95	588	639	103	175	6.0	F	L2C4-3595xS02FH6B0
	4000K	95	609	662	107	175	6.0	F	L2C4-4095xS02FH6B0
LUXEON CX Plus CoB – HD S02H6	2700K	95	1053	1145	87	350	6.0	Note 8	L2C4-2795xS02F06B0
	3000K	95	1104	1200	91	350	6.0	Note 8	L2C4-3095xS02F06B0
	3500K	95	1141	1240	94	350	6.0	Note 8	L2C4-3595xS02F06B0
	4000K	95	1182	1285	98	350	6.0	F	L2C4-4095xS02F06B0
LUXEON CX Plus CoB – HD S04H9	2700K	95	2171	2360	90	700	9.0	Note 8	L2C4-2795xS04F09B0
	3000K	95	2309	2510	96	700	9.0	Note 8	L2C4-3095xS04F09B0
	3500K	95	2392	2600	99	700	9.0	Note 8	L2C4-3595xS04F09B0
	4000K	95	2484	2700	103	700	9.0	F	L2C4-4095xS04F09B0

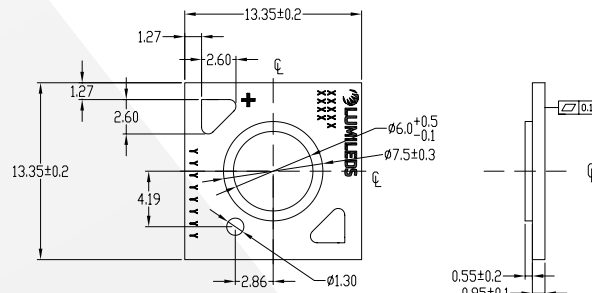
Notes:

1. Lumileds maintains a tolerance of ± 2 on CRI and $\pm 6.5\%$ on luminous flux measurements.
2. Typical CRI is approximately 2 points higher than the minimum CRI specified, but this is not guaranteed.
3. R9 value of 95CRI products is >60 .
4. Maximum flux is 10% above typical flux.
5. Light Emitting Surface (LES) is the inner diameter (phosphor area) inside the dam.
6. Part number "x" designates SDCM (2=2-step MacAdam ellipse, 3=3-step MacAdam ellipse).
7. Energy efficiency class as specified in Commission Delegated Regulation (EU) 2019/2015. The available range of energy efficiency classes is A-G.
8. Exception: Not available in EU or UK.

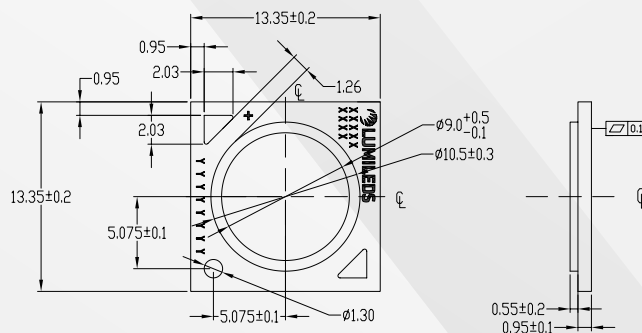
Mechanical Dimensions



L2C4-xx95xS02F04B0



L2C4-xx95xS02FH6B0, L2C4-xx95xS02F06B0



L2C4-xx95xS04F09B0

©2021 Lumileds Holding B.V. All rights reserved.
LUXEON is a registered trademark of the Lumileds Holding B.V. in the United States and other countries.

lumileds.com

Neither Lumileds Holding B.V. nor its affiliates shall be liable for any kind of loss of data or any other damages, direct, indirect or consequential, resulting from the use of the provided information and data. Although Lumileds Holding B.V. and/or its affiliates have attempted to provide the most accurate information and data, the materials and services information and data are provided "as is," and neither Lumileds Holding B.V. nor its affiliates warrants or guarantees the contents and correctness of the provided information and data. Lumileds Holding B.V. and its affiliates reserve the right to make changes without notice. You as user agree to this disclaimer and user agreement with the download or use of the provided materials, information and data. A listing of Lumileds product/patent coverage may be accessed at lumileds.com/patents.