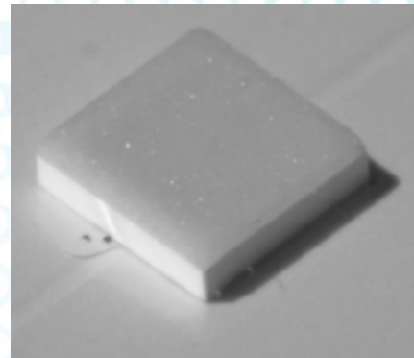


LUXEON HL1Z

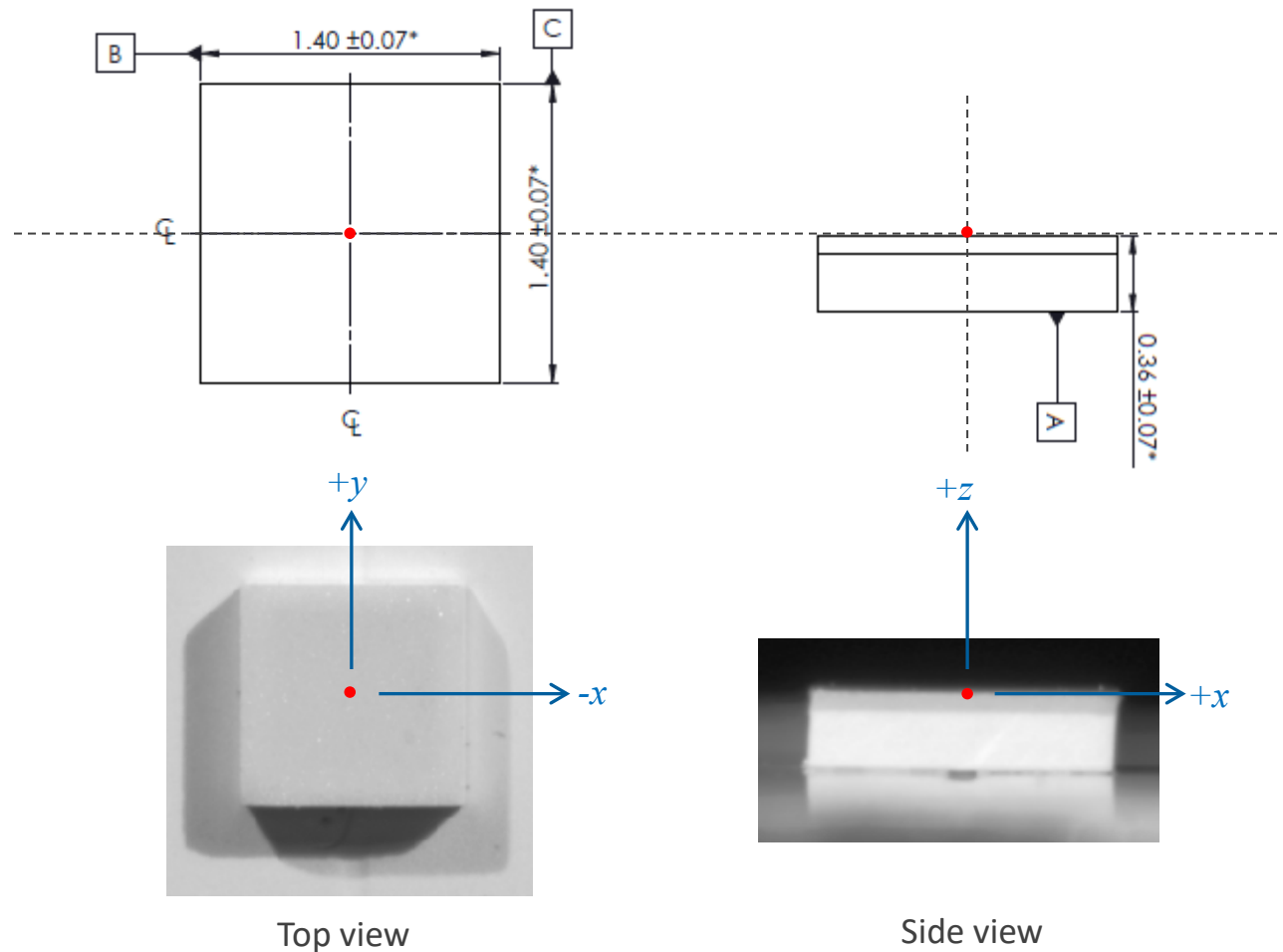
Optical Rayset

May 6, 2022



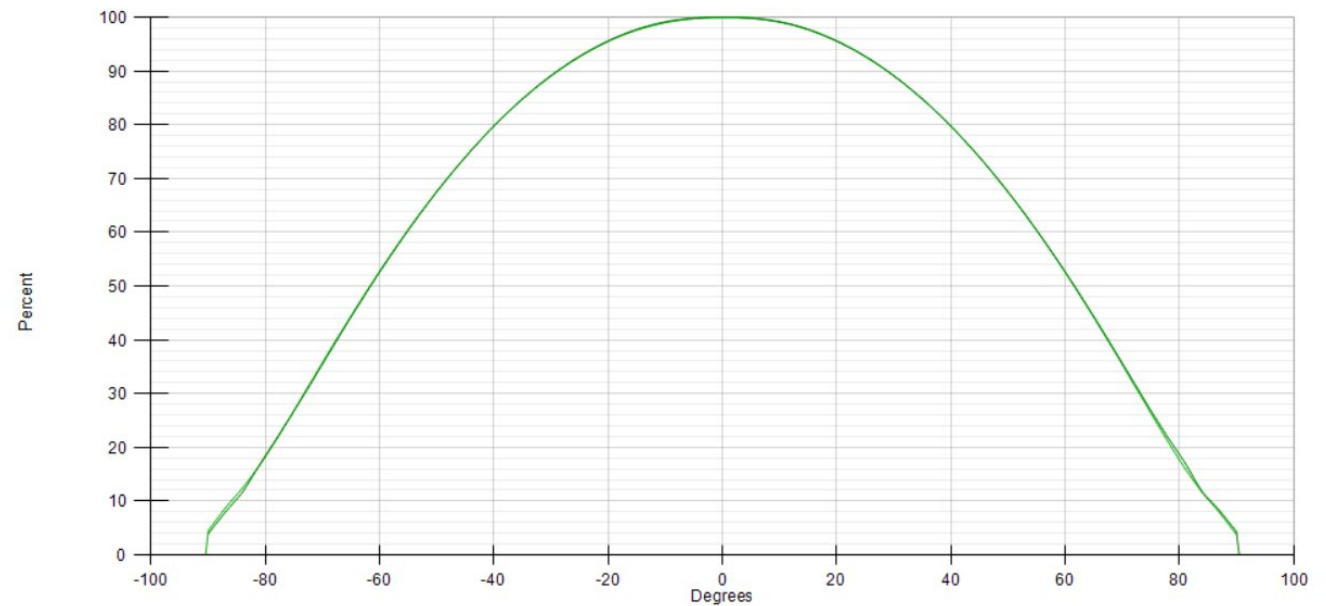
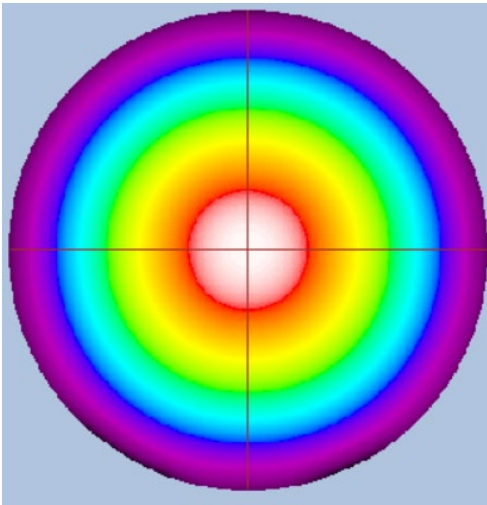
Location of Reference Point

*Note: Dimension
in mm*



- xy centered on package
- z-axis referenced to top of package as shown below
- Part measured on white reflective solder mask

Radiation Pattern – Relative Luminous Intensity versus Angle





Neither Lumileds Holding B.V. nor its affiliates shall be liable for any kind of loss of data or any other damages, direct, indirect or consequential, resulting from the use of the provided information and data. Although Lumileds Holding B.V. and/or its affiliates have attempted to provide the most accurate information and data, the materials and services information and data are provided “as is,” and neither Lumileds Holding B.V. nor its affiliates warrants or guarantees the contents and correctness of the provided information and data. Lumileds Holding B.V. and its affiliates reserve the right to make changes without notice. You as user agree to this disclaimer and user agreement with the use of the provided materials, information and data. A listing of Lumileds product/patent coverage may be accessed at [lumileds.com/patents](https://www.lumileds.com/patents).