

LUXEON 2835

Architectural Optical Rayset

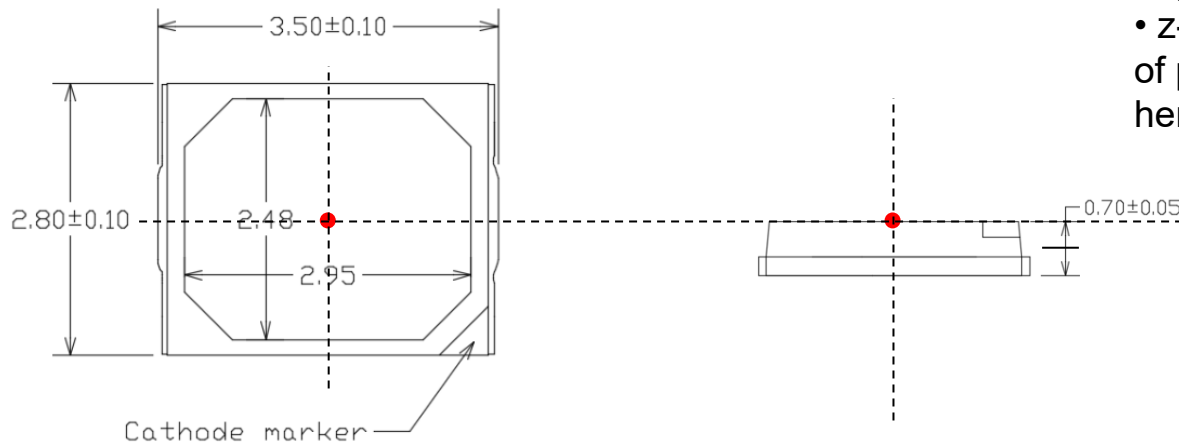
Mar 18th, 2021



LUXEON 2835C 3V

Location of Reference Point

Note: Dimensions (nominal) are in mm.



- xy centered on package
- z-axis referenced to top of package as shown here

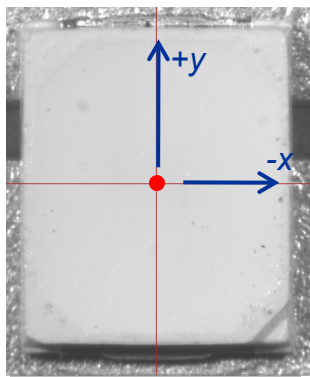


Photo 1 – top view

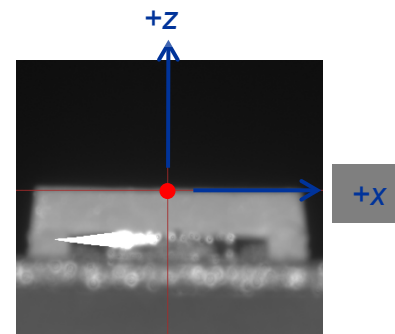
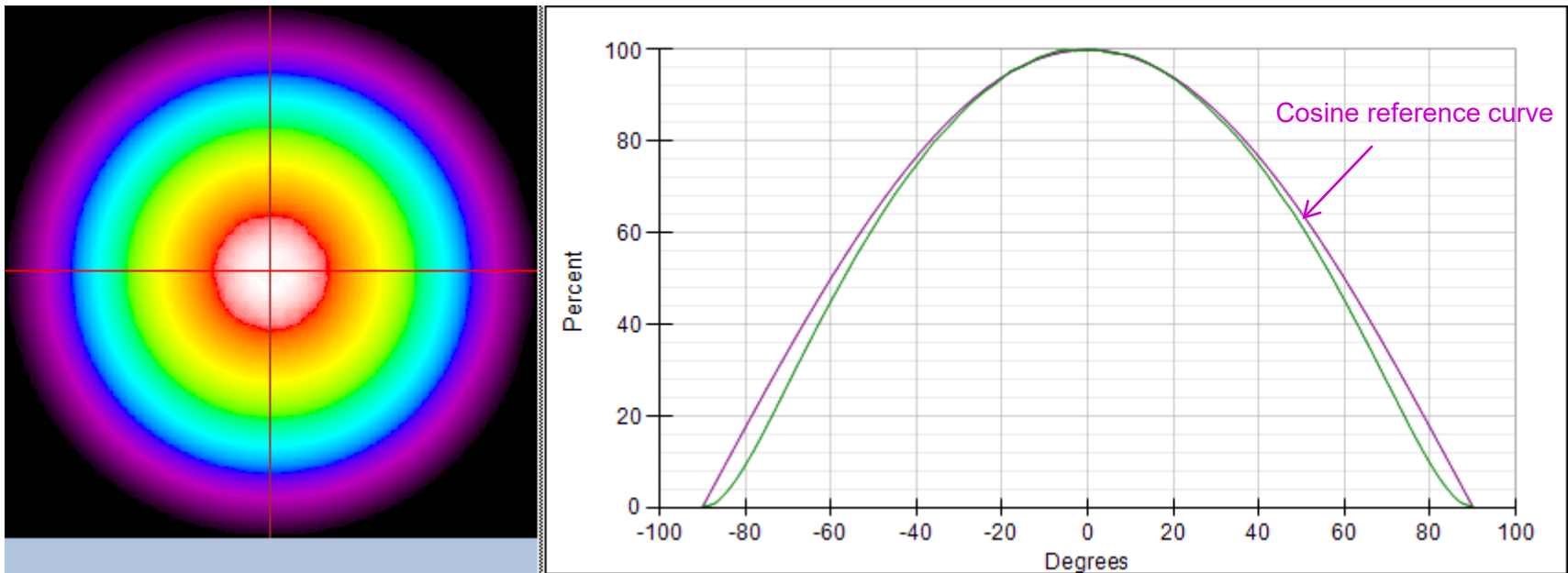


Photo 2 – side view

Note 2: Camera images are flipped and have no impact to the rayset file.

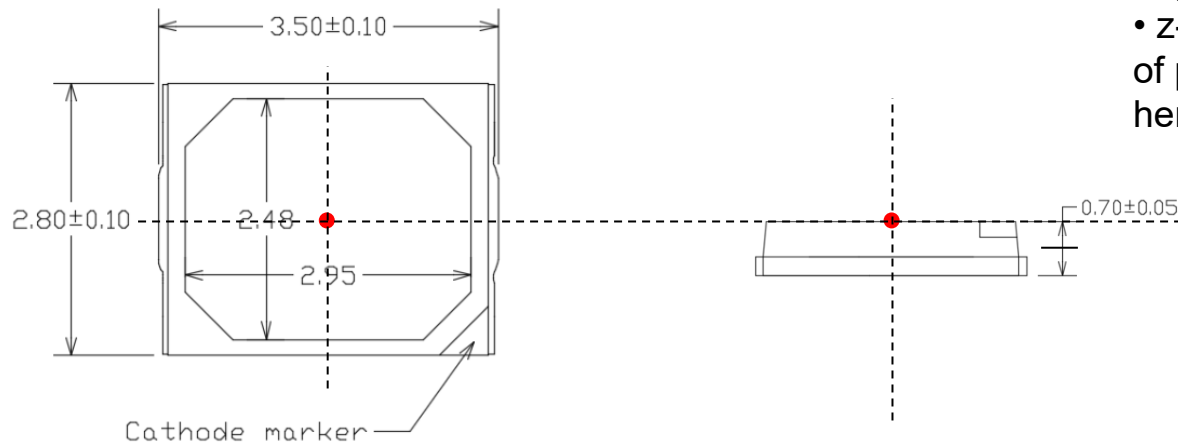
Radiation Pattern – Relative Luminous Intensity versus Angle on x-z plane



LUXEON 2835C 6V & LUXEON 2835 HE

Location of Reference Point

Note: Dimensions (nominal) are in mm.



- xy centered on package
- z-axis referenced to top of package as shown here

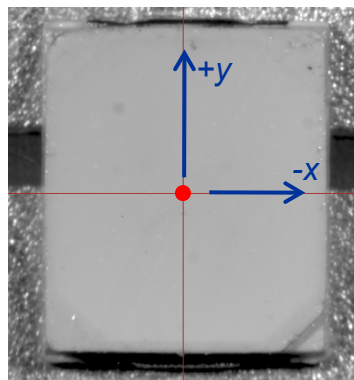


Photo 1 – top view

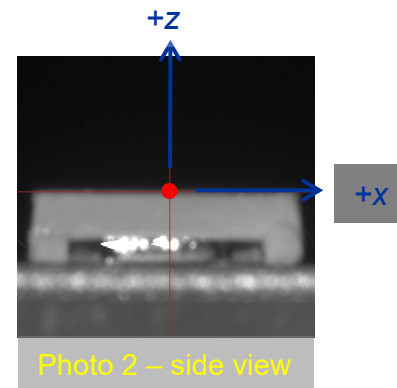
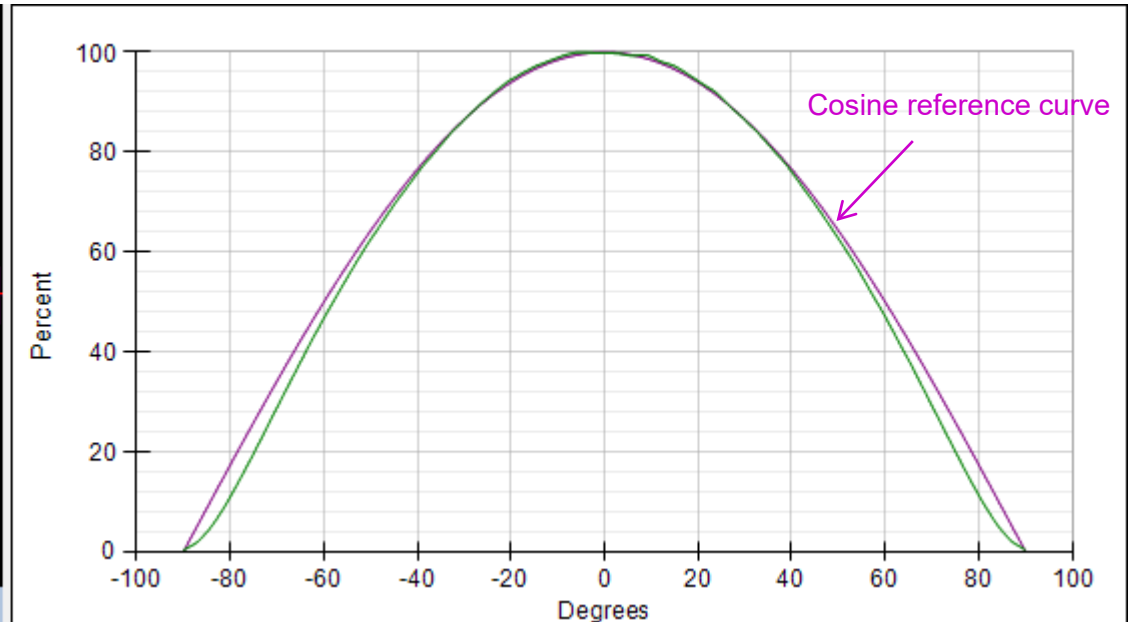
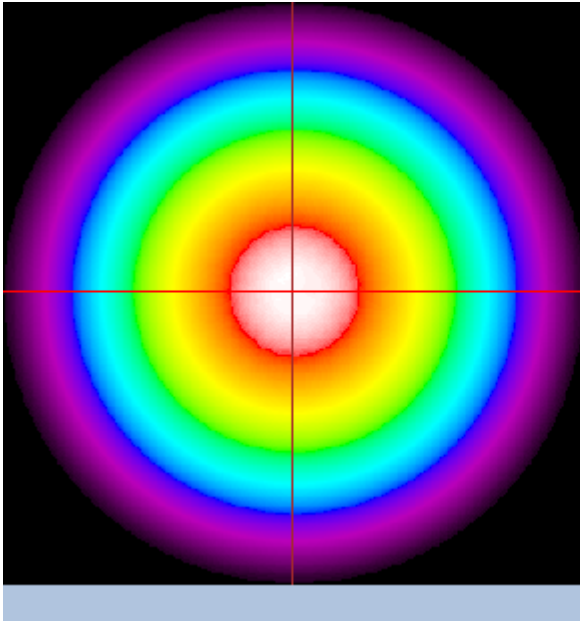


Photo 2 – side view

Note 2: Camera images are flipped and have no impact to the rayset file.

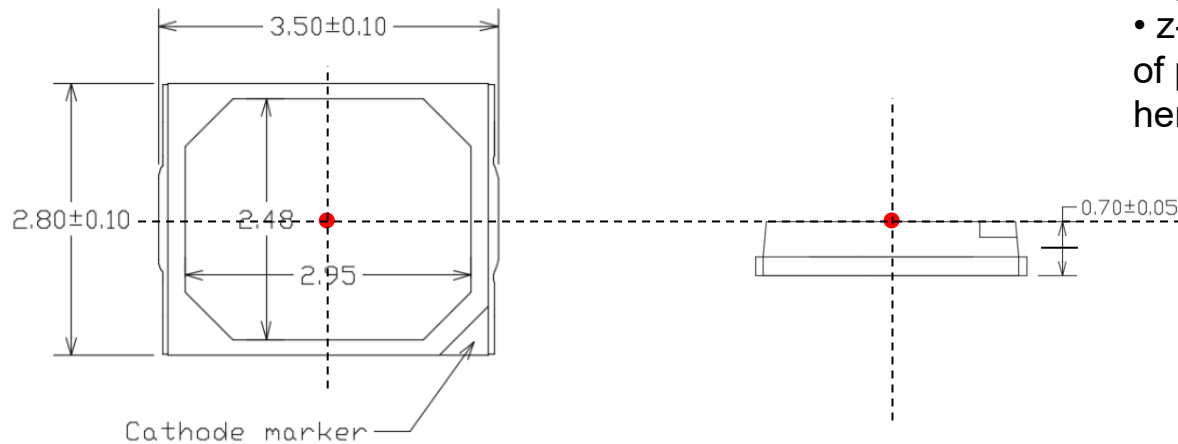
Radiation Pattern – Relative Luminous Intensity versus Angle on x-z plane



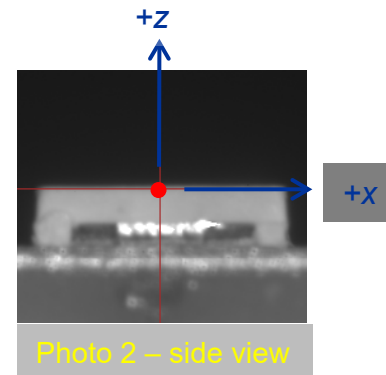
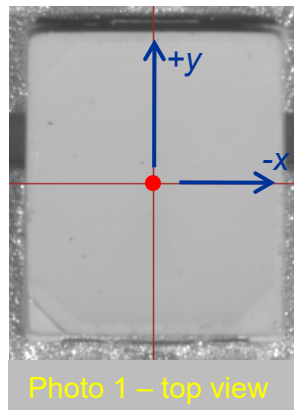
LUXEON 2835E 3V

Location of Reference Point

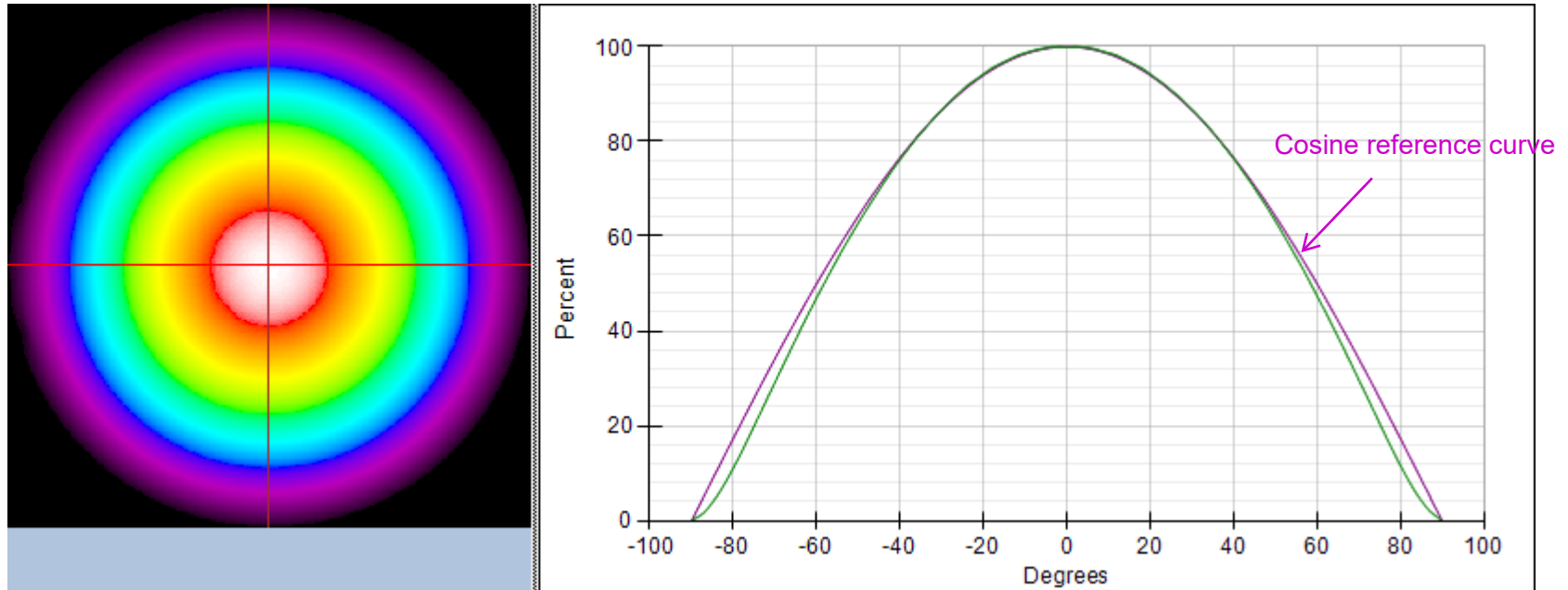
Note: Dimensions (nominal) are in mm.



- xy centered on package
- z-axis referenced to top of package as shown here



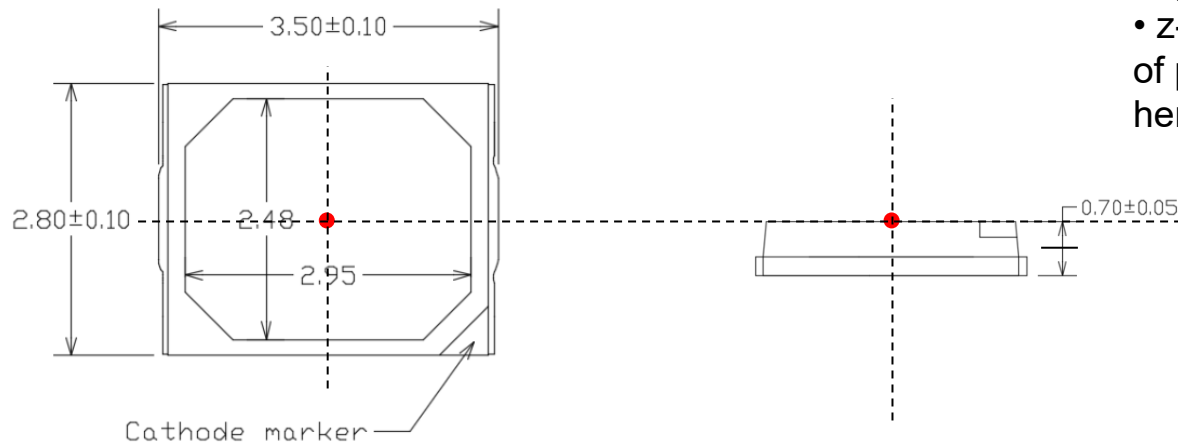
Radiation Pattern – Relative Luminous Intensity versus Angle on x-z plane



LUXEON 2835E 6V

Location of Reference Point

Note: Dimensions (nominal) are in mm.



- xy centered on package
- z-axis referenced to top of package as shown here

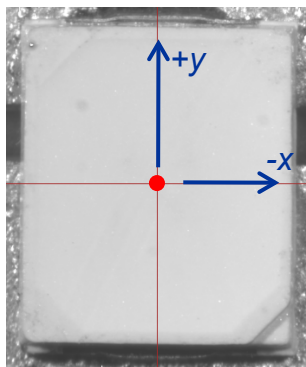


Photo 1 – top view

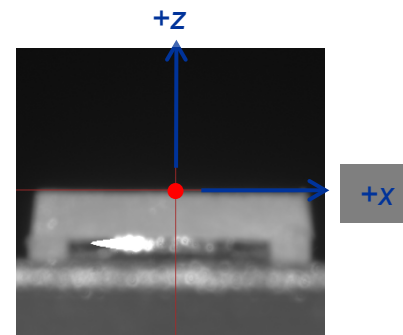
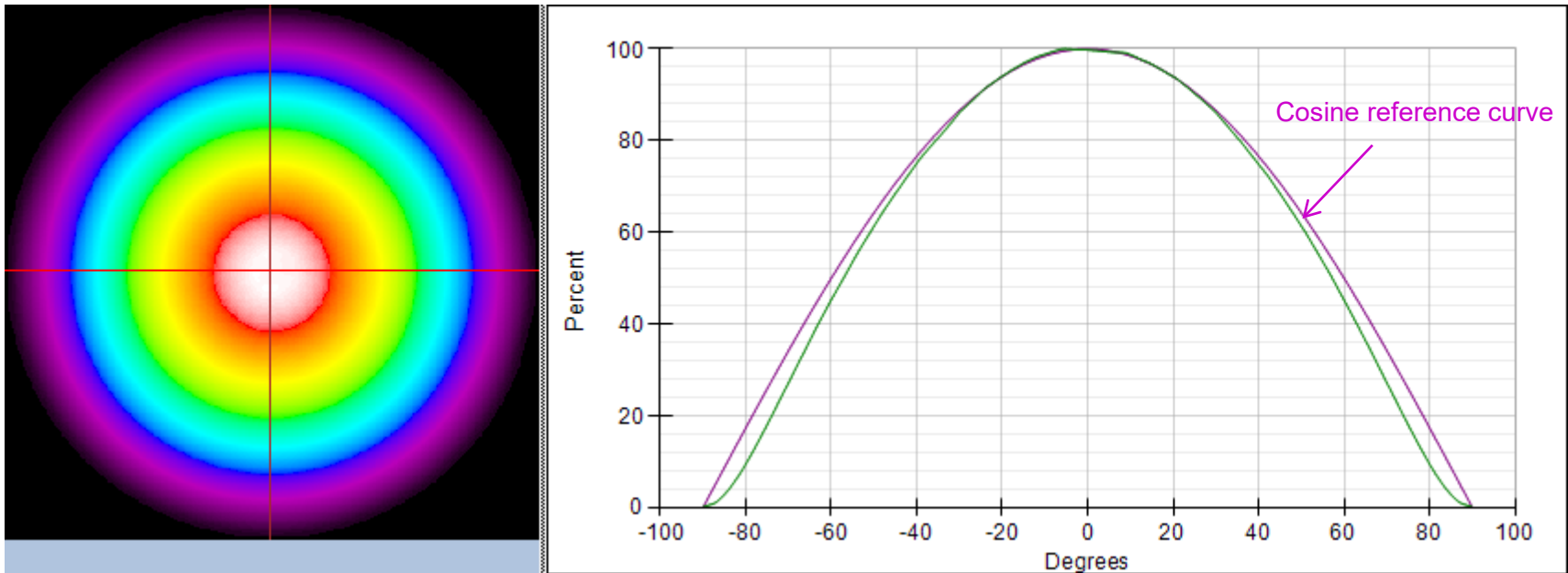


Photo 2 – side view

Note 2: Camera images are flipped and have no impact to the rayset file.

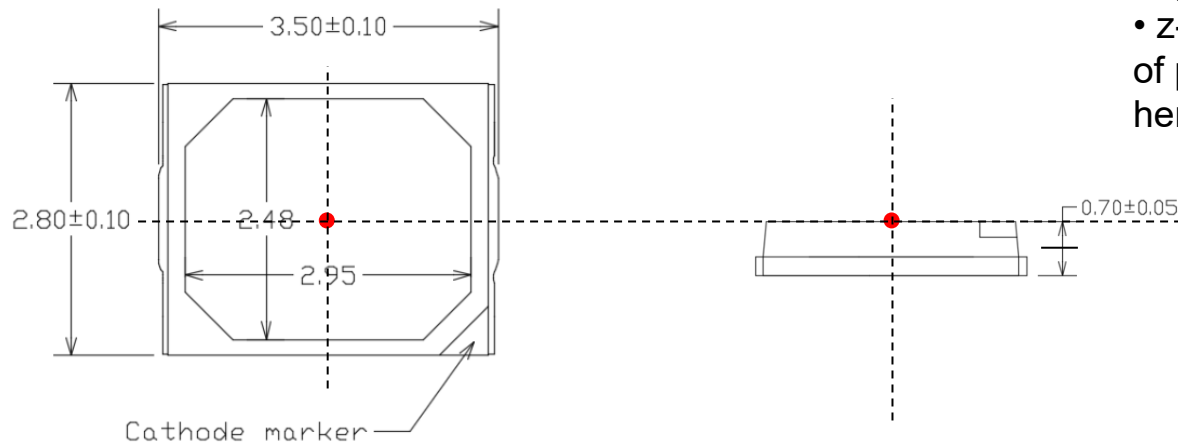
Radiation Pattern – Relative Luminous Intensity versus Angle on x-z plane



LUXEON 2835E 9V

Location of Reference Point

Note: Dimensions (nominal) are in mm.



- xy centered on package
- z-axis referenced to top of package as shown here

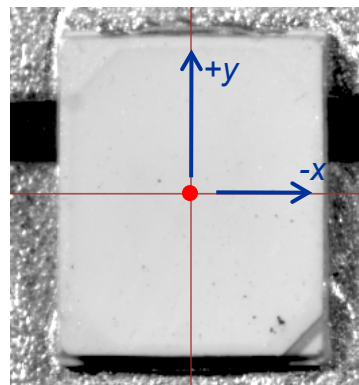


Photo 1 – top view

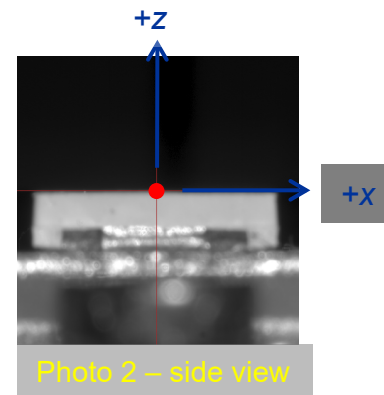
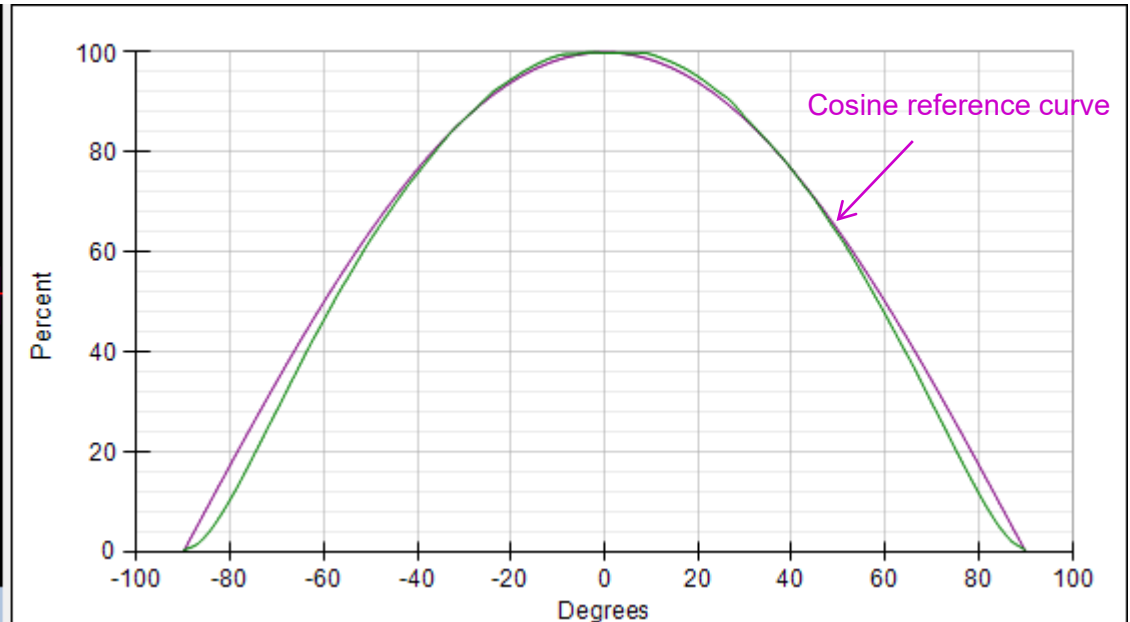
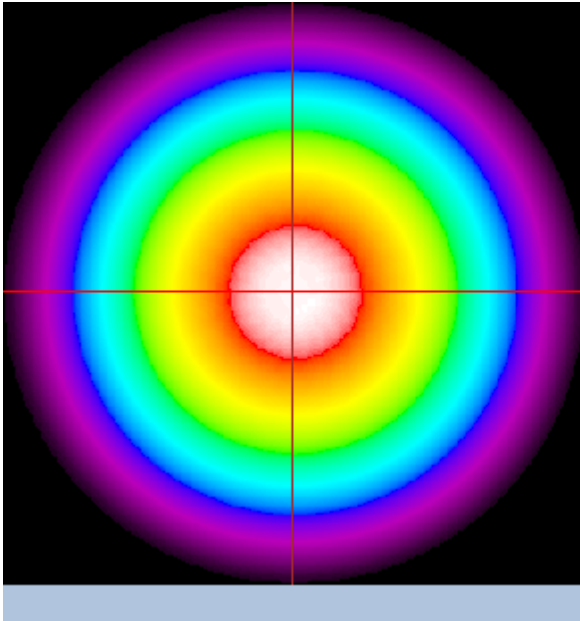


Photo 2 – side view

Note 2: Camera images are flipped and have no impact to the rayset file.

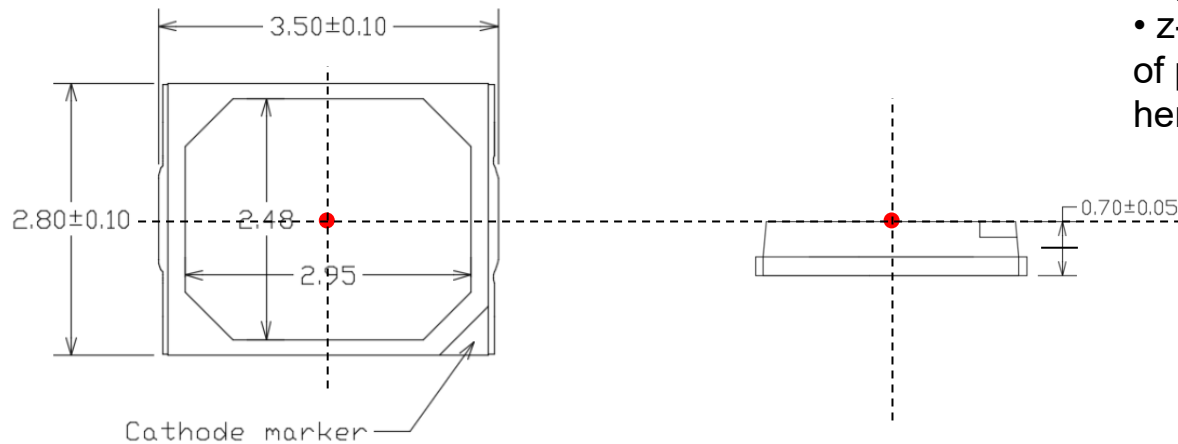
Radiation Pattern – Relative Luminous Intensity versus Angle on x-z plane



LUXEON 2835N 3V

Location of Reference Point

Note: Dimensions (nominal) are in mm.



- xy centered on package
- z-axis referenced to top of package as shown here

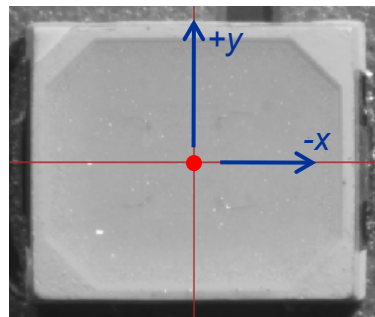


Photo 1 – top view

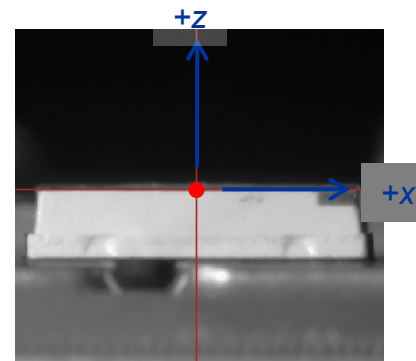


Photo 2 – side view

Radiation Pattern – Relative Luminous Intensity versus Angle on x-z plane

